

# ***Xevents, Complexity and Resilience***

John Casti

IIASA

Laxenburg, Austria

([casti@iiasa.ac.at](mailto:casti@iiasa.ac.at))

# ***What is an Xevent, Anyway?***

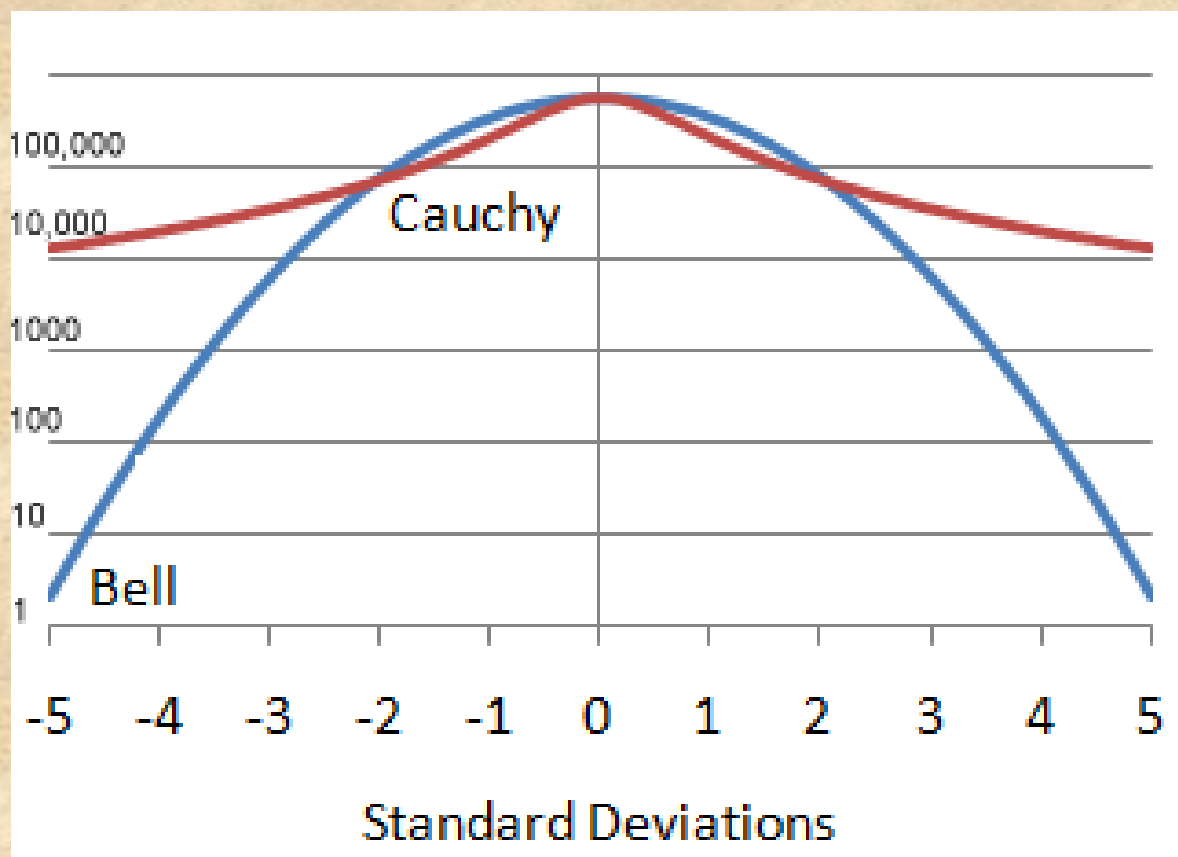
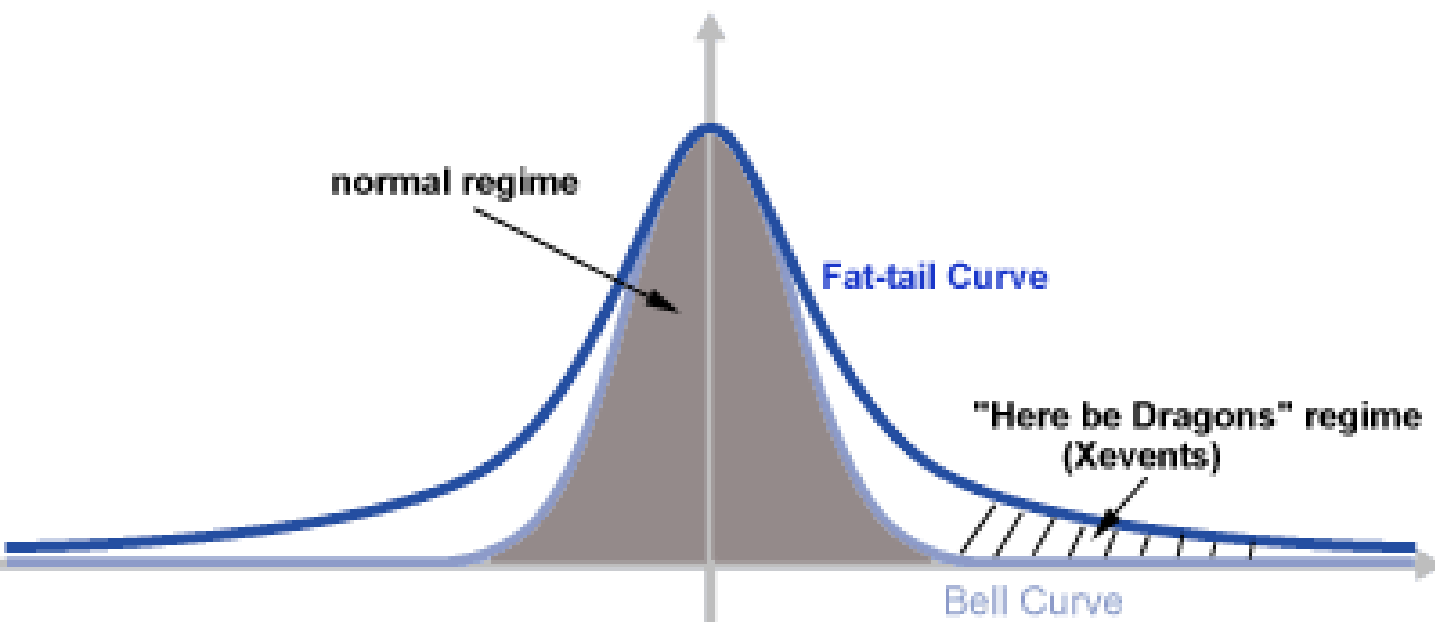
## ***The Conventional Wisdom***

- Short time duration
- Rare
- Catastrophic

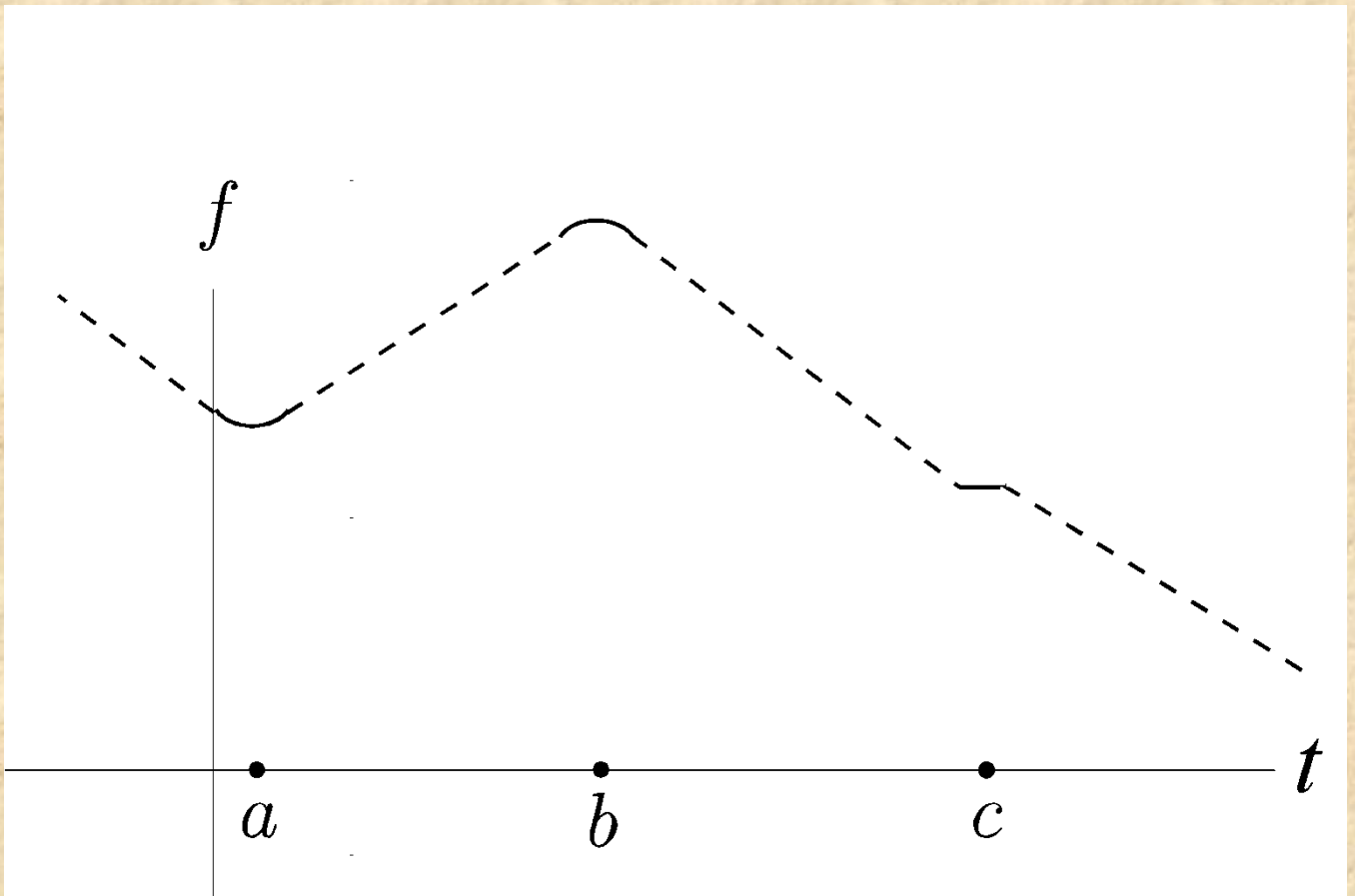
## ***The Xevents View***

- Unfolding time (UT)
- Impact time (IT)
- Rare
- Good or bad

# *The Xevents Regime*



# ***$X$ events $\approx$ Critical Points***



# ***Complexity Mismatches***

## **Law of Requisite Complexity:**

*“Only complexity can  
control/destroy  
complexity”*

# ***Examples of Complexity Mismatches***

- Arab Spring  
(gov't vs public)
- Japanese earthquake  
(nature vs humans)
- Financial Crash of 2007  
(financial services  
vs regulators)

# ***What is Social Complexity?***

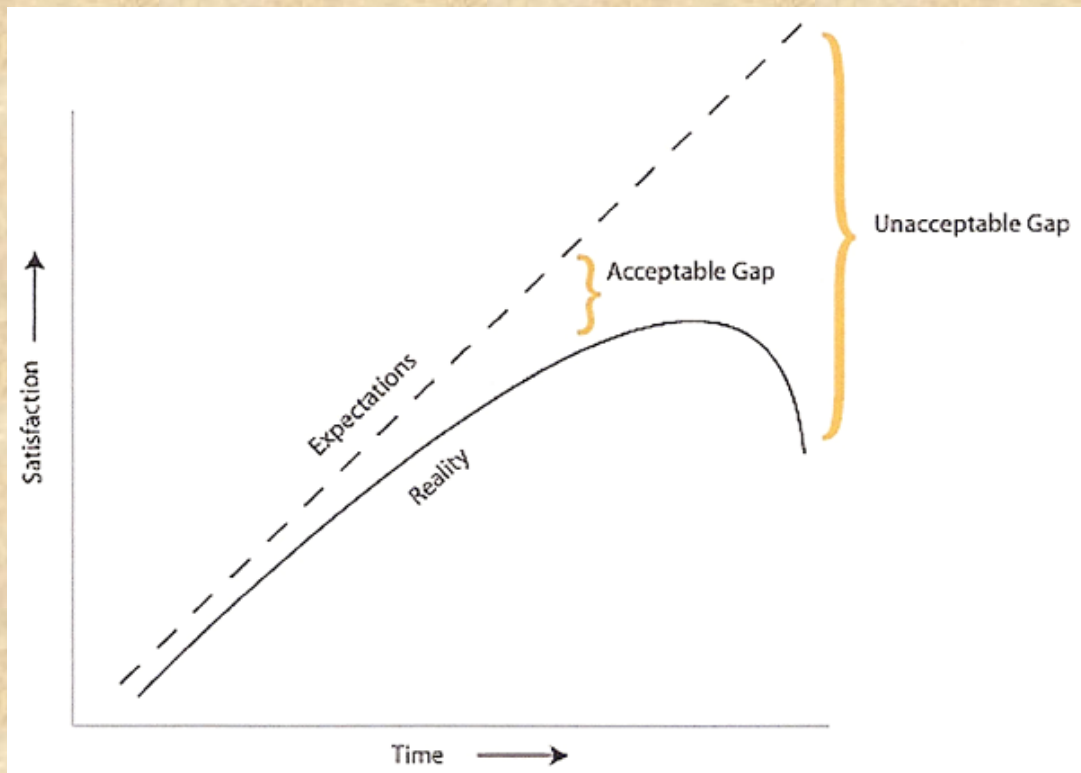
***Answer:*** At present, nobody really knows

***Idea:*** It's tied up with degrees freedom in a system

# ***Socionomics and Social Complexity?***

## ***Conjecture***

“Social complexity impacts expectations; hence, it impacts changes of social mood”





# ***Complexity and Resilience***

## **Key Observation**

Resilience is a property of a system,  
***together*** with its environment

## **Conjecture**

*greater resilience  $\approx$  smaller gap*

# ***Research Questions***

- How to measure social complexity?
- How to measure the complexity of social mood?
- What is the complexity gap of two (or more) systems?
- Timescales of change in complexity vs change in mood?